



**Basel Convention on the Control of
Transboundary Movements of
Hazardous Wastes and their
Disposal**

Distr.: General
11 February 2010

English only



**Rotterdam Convention on the
Prior Informed Consent Procedure
for Certain Hazardous Chemicals
and Pesticides in International
Trade**



**Stockholm Convention on
Persistent Organic Pollutants**

**Conferences of the Parties to
the Basel, Rotterdam and Stockholm conventions
Simultaneous extraordinary meetings**

Bali, 22–24 February 2010

Item 4 of the provisional agenda*

Matters for consideration or action by the conferences of the Parties

**Organizational structures of the secretariats of the Basel, Rotterdam
and Stockholm conventions**

Note by the secretariats

1. The annex to the present note sets out the organizational structures of the secretariats of the Basel, Rotterdam and Stockholm conventions, including staff members who were assigned to the joint services for the conventions, as at 31 December 2009.
2. A functional organization chart of the joint services as at 21 December 2009 is set out in annex I to document UNEP/FAO/CHW/RC/POPS/EXCOPS.1/INF/3.

* UNEP/FAO/CHW/RC/POPS/EXCOPS.1/1.

Annex

Organizational structure of the secretariats, including staff in the joint convention services as at 31 December 2009

Figure 1 (a): Organizational structure of the Secretariat of the Basel Convention, including staff in the joint convention services

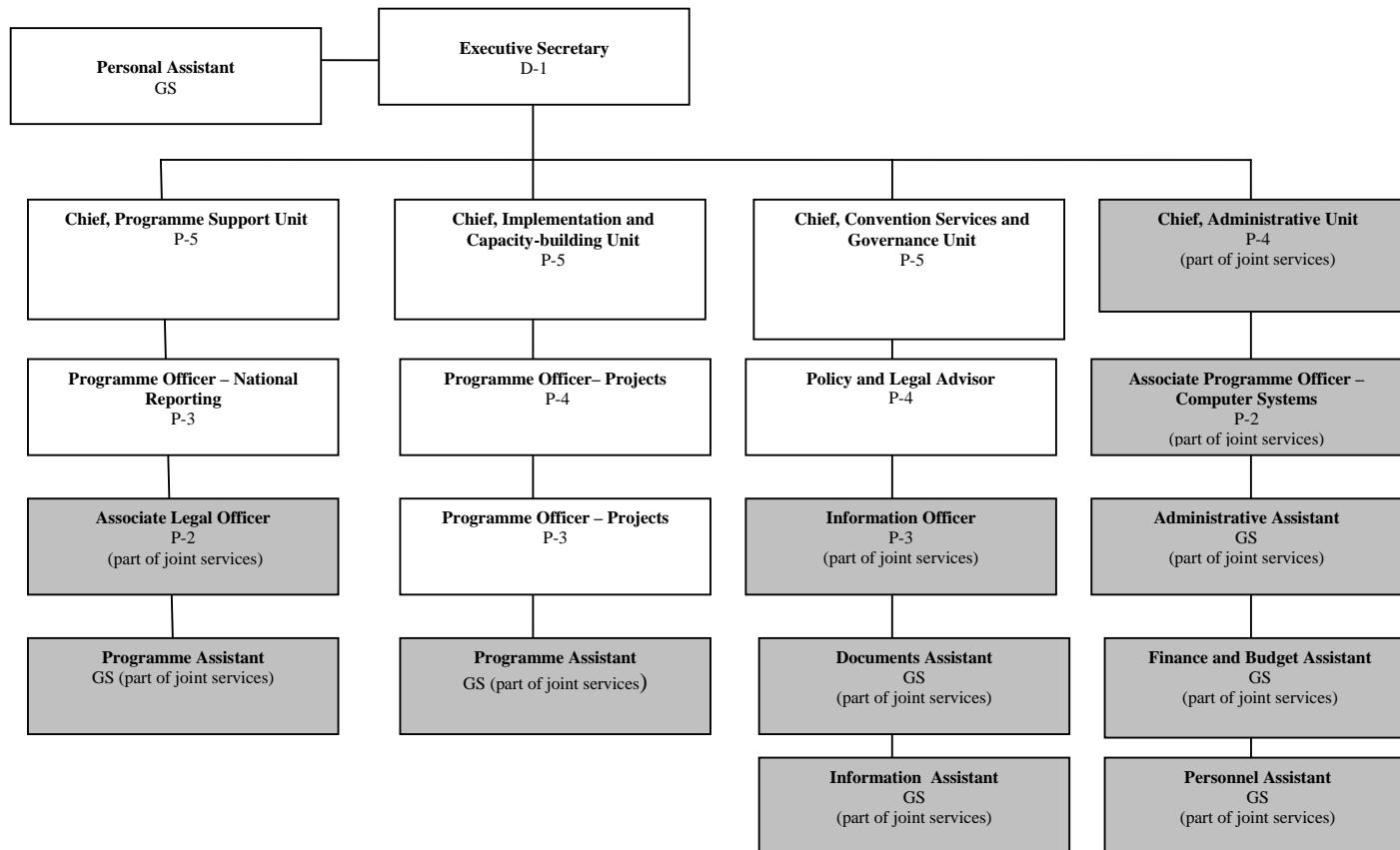


Figure 1 (b): Organizational structure of the Secretariat of the Rotterdam Convention, including staff in the joint convention services

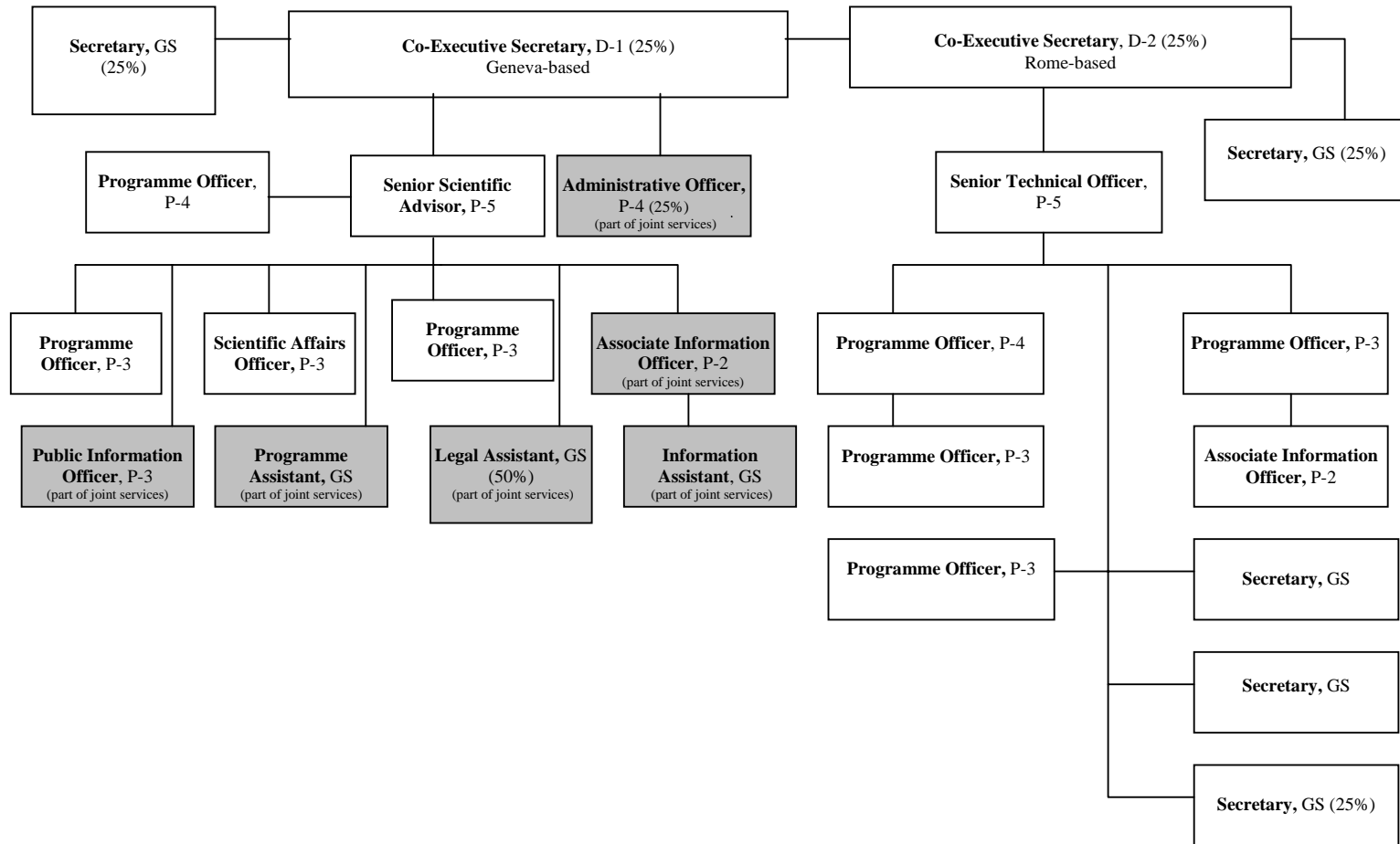


Figure 1 (c): Organizational structure of the Secretariat of the Stockholm Convention, including staff in the joint convention services

